

Water Cooled Both Axis Collimated Vertical Diode Laser Stack

Features

- Collimated beam
- Very low divergence in fast axis and slow axis
- Sealed housing



Device Specification

Optical Parameters¹

Center Wavelength Range ³	nm	808	940	940
Center Wavelength Tolerance ³	nm	±5	±5	±5
Output Power per Bar ²	W	30	40	30
Number of Bars	#	1 to 5	1 to 5	1 to 5
Spectral Width (FWHM)	nm	<3	<5	<5
Slope Efficiency per Bar	W/A	>0.75	>0.75	>0.75
Fast Axis Divergence	mrad	10	10	10
Slow Axis Divergence	mrad	20	30	20
Wavelength Temp. Coefficient	nm/°C	~0.27	~0.31	~0.31

Electrical Parameters¹

Power Conversion Efficiency	%	>32	>32	>32
Threshold Current (I_{TH})	A	<10	<13	<8.5
Operating Current (I_{OP})	A	50	55	48
Operating Voltage per Bar (V_{OP})	V	<1.9	<1.8	<1.8

Thermal Parameters

Operating Temperature Range ³	°C	+20 to 30
Storage Temperature Range ⁴	°C	0 to 55

Please refer to DILAS water specification for cooling requirements

¹Data at 25°C water temperature, unless otherwise stated.

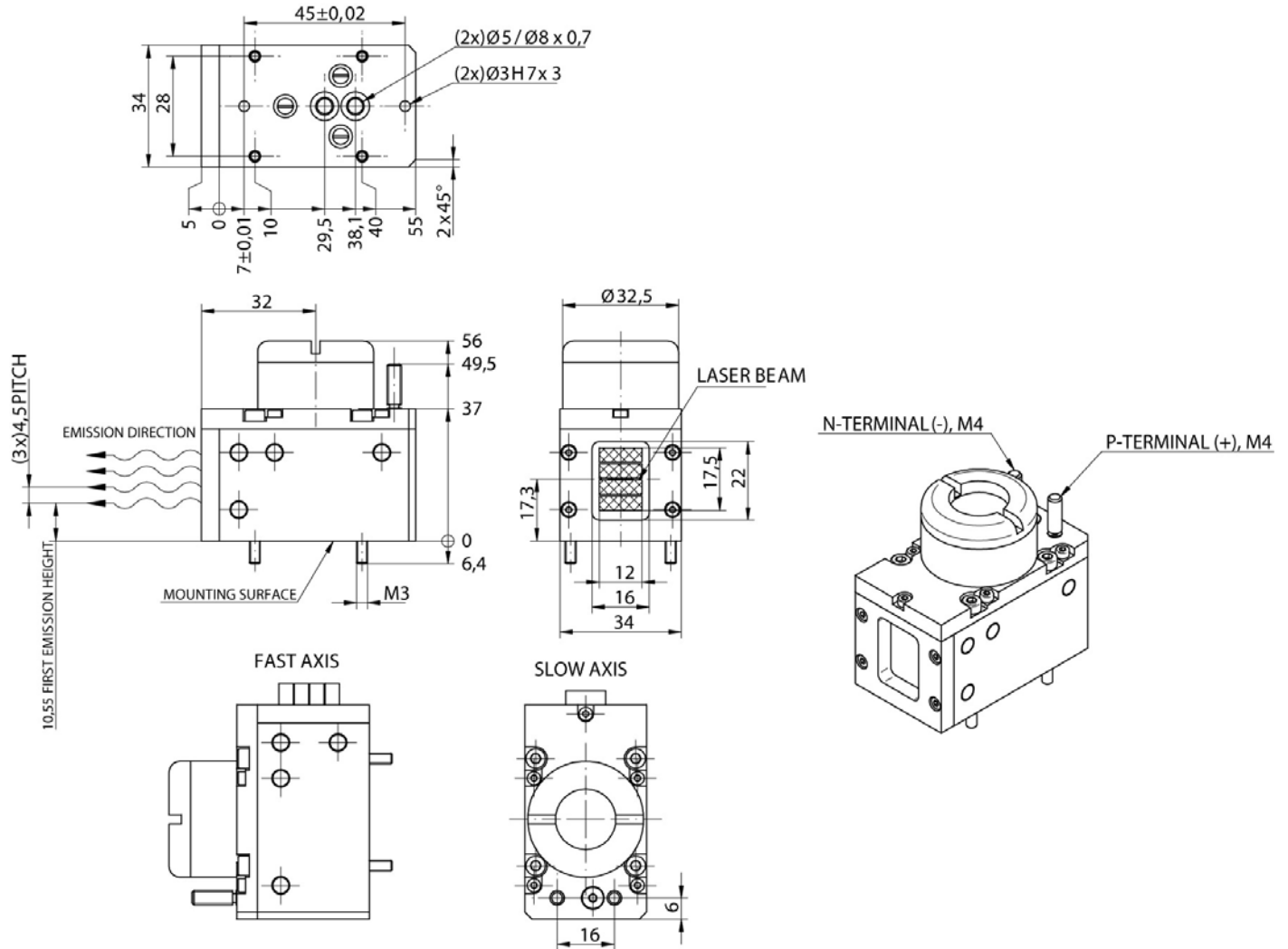
²Reduced lifetime if used above nominal operating conditions.

³Others available upon request.

⁴A non-condensing environment is required for storage and operation below the ambient dew point.

Water Cooled Both Axis Collimated Vertical Diode Laser Stack

Package Dimension



DILAS products specifications are subject to change without notice. For handling precautions, please reference the general handling instruction manual.

For complete details, please contact your local DILAS sales representative or visit our website at www.DILAS.com.

DILAS Diodenlaser GmbH
Galileo-Galilei-Straße 10
55129 Mainz
Germany
Phone: +49 (6131) 9226 0
Fax: +49 (6131) 9226 257
Email: Sales@DILAS.de
www.DILAS.com

DILAS Diode Laser, Inc.
9070 South Rita Road
Suite 1500
Tucson, AZ 85747
Phone: (520) 232-3484
Fax: (520) 232-3499
Email: Sales@DILAS-Inc.com
www.DILAS.com